

Lukáš Matoušek

II. KANTÁTA (1966)

Cantata di chiesa

• per soprano,
clarinetto basso,
fagotto e trombone.

partitura

Laus Cantici ipsi David,
In die ante sabbatum, quando fundata
est terra.
XCII.

1. DOMINUS regnavit, decorem indutus A
est: indutus est DOMINUS fortitudi-
nem, et praecinxit se.

Etenim firmavit orbem terre, qui
non commovebitur.

2. Parata sedes tua ex tunc: à secul-
o tu es.

Žalm 93.

Pochvalná píseň Davidova
ke dni sobotnímu, kdy stvořena
jest země.

HOSPODIN kraluje, v důstojnost se
oblékl, oblékl se HOSPODIN v sílu,
a přepásal se; také okršlek země
upevnil, aby se nepohnul.

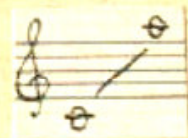
2. Utvrzenť jet trůn tvůj přede
všemi časy, od věčnosti ty jsi.

3. Pozdvihují se řeky, ó HOSPODINE,
pozdvihují řeky zvuku svého, po-
zdvihují řeky vlnobití svých.

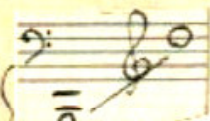
4. Nad zvuk mnohých vod, nad sílu
vln mořských mnohem silnější jest
na výsostech HOSPODIN.

5. Svědectví tvá jsou velmi jistá,
domu tvému ušlechtilá svatoat,
HOSPODINE, až na věky.

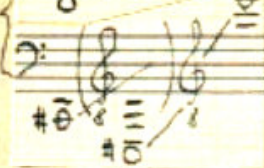
Canto : Soprano o Tenore



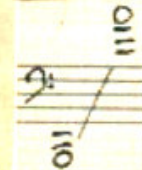
Clarinello basso in Sib
notatione disuono:



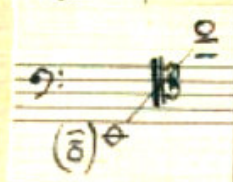
— in Sib:



Fagotto:



Trombone tenore:



Durata cca 6'30"

II. KANTÁTA (1966)

Lukáš Matoušek

(cantata di chiesa)
pro soprán, basový klarinet, fagot a pozoun
na text Davidova žalmu.

① Intonatio

Canto

1. *L*Aus Cantici, i-----psi Da-vid. In die an-te sabbatum, quando fun-da-ta est tēr-ra

X. (XIV-XVI).s. *)

attacca subito ②

② Praeludium

Adagio maestoso.

Clarinetto basso
(notazione u. Do)

Fagotto

Trombone tenore

5.

*) Missa XI. In dominicis per annum (Orbis factor) - Kyrie eleison, Christe eleison

molto rit. -----

dim. -----

16.V.1966.

③ Pars I (Canticum)

Animato

Bcl *p* *f*

Fg *mp* *pp*

Pos *mp* *pp*

Handwritten musical score for the first system, featuring vocal and instrumental parts.

Canto: DO MI-NUS reg-na-vit, de-co-rum in-

Bel: Solo *mp* *p espress.*

Fg: *p* *mp* *p espress.*

Pos: *p* *mp* *p espress.*

Measures 15, 20, and 25 are marked with box numbers.

Handwritten musical score for the second system, continuing the vocal and instrumental parts.

C: du-tus est In-du-tus est DO MI-NUS for-ti-tu-di-nem

Bel: *pp* *p* *mp*

Fg: *p* *pp* *mp*

Pos: *pp dolce* *mp*

Tempo markings: *rit. - poco meno* (measures 25-30), *pp dolce* (measures 30-35), *a tempo* (measures 35-40).

Measures 25, 30, and 35 are marked with box numbers.

Reference: (19. VII 66)

C. *Do* *MI-NE* *Ex-le-va-re-runt flu-mi-na vo-cent su-am* *E-le-va-re-runt flu-mi-na*

Bel *mp* *sfz* *mp*

Fg *mp* *sfz* *mp*

Pos *mp* *mp*

molto rit. *Andante*

C. *flu-cus su-os.* *à dolc.* *vo-ci-bus a-qua-rum mul-ta-rum*

Bel *mp* *mp*

Fg *mp* *mp*

Pos *mp* *mp*

6. IX. 66

Handwritten musical score for C, Bel, Fg, and Pos. The score includes lyrics and performance instructions.

C: *mi-ra-bi-li-um e-la-ti-vum-um ma-ris mi-ra-bi-lis in al-tis DO-MI-NUS*

Bel: *ff maestoso*

Fg: *ff maestoso*

Pos: *f maestoso*

Performance markings: *120*, *crese.*, *add.*, *ff maestoso*, *f maestoso*, *f maestoso*, *9. IX. 6*

Handwritten musical score for Canto, Bel, Fg, and Pos. The score includes lyrics and performance instructions.

Canto: *Tes-ti-mo-ni-a tu-a mudo*

Bel: *f*, *sub. p*, *mf*

Fg: *f*, *sub. p*, *mf*

Pos: *f*, *sub. p*, *mf*

Performance markings: *mf*, *f*, *sub. p*, *mf*, *mf*, *mf*, *mf*, *mf*

101 rit. *poco meno e dlee cantabile*

Canto
 Tes---ti---no---nia mu---a cre-di-bi-li-a fac-ta sunt

Bcl
 pp dolce

Fg
 pp dolce

Pss
 pp dolce

102 *Tempo I*

Canto
 ni---nis do---num do---num tu---am de---ct san---cti---s---tu---do

Bcl
 rit. tempo up

Fg
 up

Pss
 up

rit----- $\text{♩} = (68-88)$ 30

C | ♩ DO-MI-NE

Bel ♩ *f* (Solo)
mp espress

Fg ♩ *p espress*

Pos ♩

40

C ♩

Bel ♩ *sub. p*

Fg ♩

Pos ♩ Solo *mf*

150
af
 Tes - ti - mo - ni - a Tes - ti - mo - ni - a tu - a

mp

sub. p

sub. p

Detailed description: This system contains the first four measures of a musical score. The vocal line (C) is written in treble clef with a key signature of one flat and a time signature of 3/4. The lyrics are 'Tes - ti - mo - ni - a' followed by a repeat of the same phrase. The piano accompaniment consists of three staves: Bassoon (Bel), Flute (Fg), and Oboe (Pos). The bassoon part has a dynamic marking of *mp*. The flute and oboe parts have a dynamic marking of *sub. p*. The score includes various musical notations such as slurs, accents, and dynamic markings.

160
rit. poco meno
mp
 cre - di - bi - li - a facta sunt mi - nis do - mine tu - a de - cet san - cti - tu - do

mp

mp

Detailed description: This system contains the next four measures of the musical score. The vocal line (C) continues with the lyrics 'cre - di - bi - li - a facta sunt mi - nis do - mine tu - a de - cet san - cti - tu - do'. The piano accompaniment (Bel, Fg, Pos) continues with a dynamic marking of *mp*. The score includes a tempo marking of *rit. poco meno* and various musical notations such as slurs, accents, and dynamic markings.

rit.

DO--MI--NE
in longi-tu-di-nem di-e--

rit.

2'30"

pausa maxima 22. I. 66.

⑦ Postludium

Adagio maestoso.

5.

rit. molto rit.

Bel

Fg

Pos

mp

dim

rit.

pausa maxima

16. I. 1966

Sláva Bohu na výsostech a pokoj lidem dobré vůle.

22. I. 66. K. Matanik.

Postludium Obřadní postludium