

Lukáš MATOUŠEK

RADICES TEMPORUM

(Kořeny času / Roots of the Time)

1981

(opravená verze / revised version 1999)

Tuba contrabbassa

Tyto noty je **DOVOLENO** kopírovat.
It is **ALLOWED** to make copies of this music.
Es ist **ERLAUBEN** diese Noten zu kopieren.
Est-il **POSSIBILE** de faire des copies de cette musique.

RADICES TEMPORUM Lukáš Matoušek

(Kořeny času / Roots of the Time)

* 1943

- 1981 -

I. Entrata

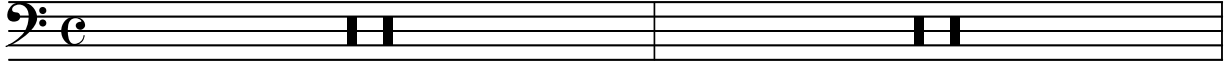
Allegro

8

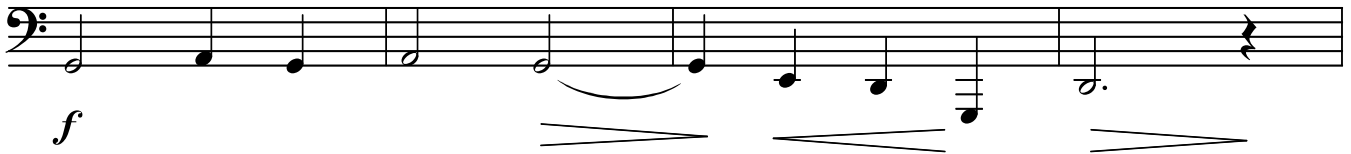
A

8

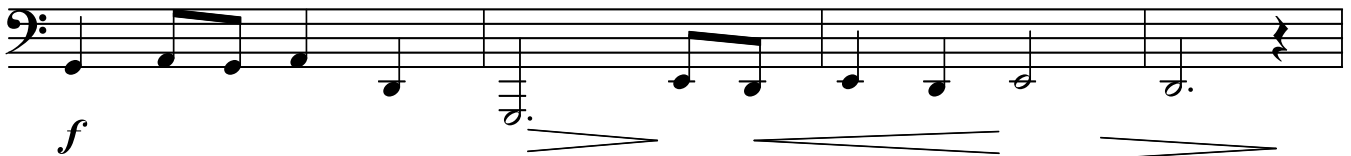
Tba cb



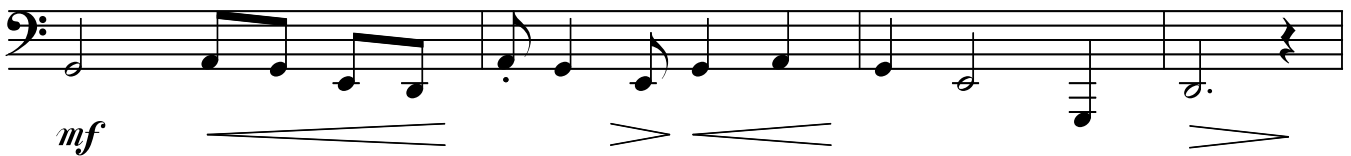
17 **B**



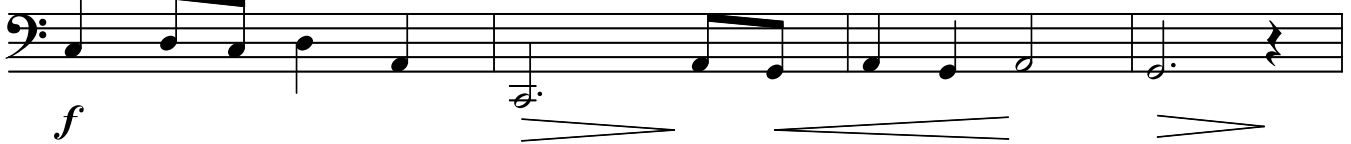
21



25 **C**



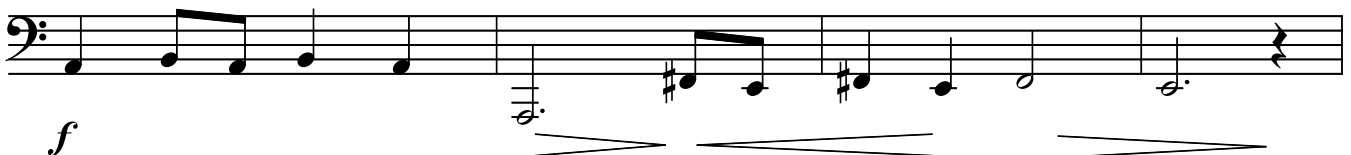
29



33 **D**



37



Tuba contrabbassa

41 **E**

Musical staff for measure 41, starting with a bass clef and a forte (*f*) dynamic. The staff contains a sequence of eighth and quarter notes with various accidentals, including sharps and naturals. A hairpin crescendo is shown below the staff.

45

Musical staff for measure 45, starting with a bass clef and a forte (*f*) dynamic. The staff contains a sequence of quarter notes, including a half note with a fermata. A hairpin crescendo is shown below the staff.

49

Musical staff for measure 49, starting with a bass clef. The staff contains a sequence of quarter notes, followed by a half note with a fermata. A dynamic marking of **F** and a measure rest for 10 measures are indicated above the staff.

61 **G**

Musical staff for measure 61, starting with a bass clef. The staff contains a sequence of quarter notes, followed by a half note with a fermata. Dynamic markings **H** and **I** are placed above the staff. A measure rest for 10 measures is indicated above the first part of the staff. A trill (*Tr*) is marked below a note in the second part of the staff.

80

Musical staff for measure 80, starting with a bass clef and a mezzo-forte (*mf*) dynamic. The staff contains a sequence of quarter notes, including a half note with a fermata. A hairpin crescendo is shown below the staff.

84

Musical staff for measure 84, starting with a bass clef and a forte (*f*) dynamic. The staff contains a sequence of quarter notes, including a half note with a fermata. A hairpin crescendo is shown below the staff.

88 **J**

Musical staff for measure 88, starting with a bass clef and a forte (*f*) dynamic. The staff contains a sequence of eighth and quarter notes with various accidentals. A hairpin crescendo is shown below the staff.

92

Musical staff for measure 92, starting with a bass clef and a forte (*f*) dynamic. The staff contains a sequence of quarter notes, including a half note with a fermata. A hairpin crescendo is shown below the staff. The dynamic marking *f marcato* is indicated below the staff.

Tuba

II. Credo

Allegretto moderato

8

Tuba

A Allegro

8

5

B

15

6 7

29

Trb.

p *p*

C

35

2 2

43

(2+2+3) 2 (2+2+3)

sfz *sfz*

rit.

48

4 (2+2+3) 3

D Moderato assai (♩ = ca 60)

56

3 4 11

Perc.

E

75

7 7

Trb.

Fl, Cl

F

91

10 accel. 2

sf *sf*

G Allegro

H

105

10 9

I

124

VI 1. (3+2+2)

f *sf*

128 (2+3) (3+2+2)

ff

133 (2+3+2) 5

f

K Moderato

142

Tr 1 Tba.

p dolce

Tuba

III. Postludio

Larghetto espressivo e rubato **A**

meno mosso

6 6 Tr, Trb *p*

15 **B** *poco accel.*

f 3 3

19 *poco più mosso*

2

23

28 **C**

31

34 *meno mosso* **D** *più mosso*

6 *ff*

42 *rit.* **E** *meno mosso* **F** *Tempo I.*

8 7 16

Lukáš Matoušek

výběr skladeb s tubou / selected compositions with tuba

Vzpomínka na pana Sudka / recollection on Mr. Sudek (1979) (2tr, cor, 2trb, tba)	10'
Fanfára 17. listopadu / Fanfare of the 17th November (1990) pro žesťové nástroje / for 12 brass (4tr, 4cor, 3trb, tba)	4'
Česká intráda / Czech Intrada (1992), (2 tr, 4 cor, 2 trb) - verze / vesion (2018), (3 tr, 3 trb, tba)	4'

Diskografie / Discography

CDs:

Lukáš Matoušek: Chamber Music; Studio MATOUŠ MK 0044-2931 (1998)

Vzpomínka na pana Sudka, Barvy a myšlenky, Proměny ticha, Aztékové,
Sonáta pro housle a klavír, Pečeť mlčení (Sigillum silentii), Fanfára 17.listopadu

Atelier I; Editio Český rozhlas CR 0115-213 (1999), Kořeny času [Radices temporum] pro orchestr /
Roots of the Time for orchestra

Münchner Flötentrio; CAVALLI RECORDS CCD 267 (2004) - Mozaika

Umělecká beseda, Komorní hudba členů; Studio MATOUŠ MK 0059-2132 (2011)

Trio pro klarinet, housle a klavír

Svár teorie s praxí (14) 2017; Nakladatelství AMU (2017), přílohové CD k publikaci „Generace?“

Sedm smrtelných hříchů Hieronyma Bosche / Seven Capital Sins of Hieronymus Bosch

Records:

Sonatori di Praga; LP - Panton 11 0392 (1975); Sedm hříchů Hieronyma Bosche

Hommage à Machaut; LP - Panton 8111 0056 (1978); Hoquet Guillaumea de Machaut

Hudba pro žesť / Brass Music; LP - SUPRAPHON 1111 3903 (1986); Vzpomínka na pana Sudka

E-MAIL cameralis.lukas@gmail.com

CZ <http://www.musicbase.cz/skladatele/618-matousek-lukas/>

EN <http://www.musicbase.cz/composers/618-matousek-lukas/>